

ENGLISH

Aichi
Tokoname

The City nearby
Centrair Airport

FREE
¥0

Talan

Gourmet & Sightseeing Guide



Tokoname, a pottery town, is conveniently located a short distance from Chubu Centrair International Airport and is easily accessible from both overseas and other prefectures in Japan. Whether you'd like to go out on a search for hidden lucky cats, or try your hand at making pottery, this town has something to offer everyone.

Why not visit the town of Tokoname, where an abundance of "Happy" (fortune) awaits?

♡ Happy come on ♡
TOKONAME
#happycomeontokoname

A sought-after chiffon cake that melts in your mouth



Café Gallery Senrikou



A great selection of sweets, including the house-baked fluffy chiffon cakes, parfaits, and shaved ices are available. Enjoy the sweets with a freshly ground, made-to-order coffee.

Contact: ☎ 0569-36-3237 2-128-1 Togo-cho, Tokoname City Open: 11:00–17:30 (L.O. 17:00); *for Oct.–Feb., 11:00–17:00 (L.O. 16:30) Closed: Fri. & 1st Thurs. Access: 5-min. walk from Grüün “Tojiki Kaikan” (Ceramics Hall) bus stop Parking: 6 spaces

MAP B-8



1 Fruits Chiffon (¥650) made with locally sourced eggs & seasonal fruits.
2 Spacious & relaxing interior with a gallery.

With an old-time favorite pudding, enjoy a soothing moment of relaxation in an elegant atmosphere



1 The pudding (¥500) is handmade by the owner every day. Quantities are limited, so visit early!
2 The hand-drip (pour-over) coffee is brewed from the house-roasted beans.



Take Coffee Roastery

Relaxing café filled with flowers and antiques. The custard pudding made with local eggs is velvety smooth and delicious with slightly bitter caramel. The perfect shape is also pleasing to the eye.

Contact: ☎ N/A 3-72 Sakaemachi, Tokoname City Open: 12:00–17:00 on weekdays; 11:30–17:30 on weekends & holidays Closed: Thurs. & Fri. (open if holiday) Access: 4-min. walk from Grüün “Tojiki Kaikan” (Ceramics Hall) bus stop Parking: N/A

MAP A-8



TOKONAME-ya

A café & gallery on a mission to share the charm of Tokoname, featuring the town's specialties both in its menu and the space. Recommended items include Tokoname Chirashi (scattered sushi) (¥1,500) and Sencha (green tea) Set (¥750), with which you can enjoy tea served in a Tokoname teapot.

Contact: ☎ 0569-35-0470 3-111 Sakaemachi, Tokoname City Open: 10:00–16:00 Closed: Mon. Access: 3-min. walk from Grüün “Tojiki Kaikan” (Ceramics Hall) bus stop Parking: 8 spaces

Enjoy blissful “teatime” with a Tokoname teapot



1 A café & gallery converted from a ceramic pipe factory from the early 1900s. Works of Tokoname ware are displayed on the second floor. 2 The teatime combo includes some seasonal wagashi (traditional Japanese confections). The tea leaves can be eaten, too.

MAP B-8

The hand-shaped cookies make quite an impression! Enjoy the wondrous atmosphere at this otherworldly café



BARBARA COFFEE ROASTERS

Since its opening in the winter of 2021, this café has drawn much attention on social media with its photogenic desserts and drinks. The incredibly lifelike taxidermied animals placed throughout the café will surely catch your eye, too!

Contact: ☎ N/A 1F Shirokuma Building, 6-208 Sakaemachi, Tokoname City Open: 11:00–17:00 (L.O. 16:30) Closed: Irregular holidays Access: 4-min. walk from Grüün “Yakimono Sanpomichi Nishiguchi” (Pottery Footpath West Entry) bus stop Parking: 3 spaces

MAP A-9



1 Chocolate cake topped with fluffy soft-serve ice cream, seasonal fruits, and a hand-shaped cookie (¥935). 2 Soda with house-made syrup (¥770). Soft drinks are photogenic, too! 3 The polar bear exudes a powerful presence. Relax and enjoy the décor as you wait for your order to arrive.



Try blissful sweets and be happy!

#TokonameCafé

#TokonameSweets

#YakimonoSanpomichi

The place where the old and the new meet. Enjoy hopping around retro-modern cafés.

Yakimono Sanpomichi (Pottery Footpath)

With the map of the footpath in hand, stroll through the maze of alleys

When you are in Tokoname, the town of pottery, be sure to visit the Yakimono Sanpomichi (Pottery Footpath). The town, once lined with 300 brick chimneys and pottery factories, has now been reborn as a nostalgic and magical area with chic cafés, variety stores, and galleries scattered like hideaways. The hilly area overlooking the sea in the distance has many pottery studios and black-board fenced workshops with kilns that make a mere stroll an exciting experience.

And if you get tired from walking, why not drop into one of those cafés for a break? Make sure to enjoy everything the Pottery Footpath has to offer!



Enjoy your meals with Tokoname ware

In Tokoname, the town of pottery, you will find quite a few eateries that serve food and drinks in Tokoname ware. Savor not only the food and drinks, but also the tableware, so you can satisfy both your stomach and the heart! Look for the symbol above to find places that serve food and drinks in Tokoname ware.



Shoyu Dango (soy sauce dumplings) ¥120/ stick

Dango Chaya (Dango Tea House)



The locally made tamari soy sauce makes the dango (dumplings) so delicious. Once you start eating them, you won't be able to stop. The venue offers a cozy, homelike atmosphere, and the staff are always happy to talk about Tokoname's past and answer questions.

Contact: ☎ 0569-34-3794 4-11 Sakaemachi, Tokoname City Open: 10:00–16:00 Closed: Irregular holidays Access: 3-min. walk from Grüün “Yakimono Sanpomichi Nishiguchi” (Pottery Footpath West Entry) bus stop Parking: 4 spaces

MAP B-8



Melonpan (melon-shaped bun) ¥350

Pan Koubou Fusha (Bakery Fusha)



This bakery offers a line-up of fine bread that takes full advantage of the flavor of each ingredient. The melonpan (melon-shaped bun)—which is made with Tokoname milk and includes walnuts worked into the dough—is especially popular. Terrace seating is available.

Contact: ☎ 0569-34-8833 3-90 Sakaemachi, Tokoname City Open: 11:00–17:00 Closed: Tue. (open if holiday) Access: 5-min. walk from Grüün “Tojiki Kaikan” (Ceramics Hall) bus stop Parking: around 5 spaces

MAP B-8



Yaki-Gela (baked sweet potato topped with gelato) ¥770

Ashiyu Café Ore No Kin No Yaki-Imo (Footbath Café My Golden Baked Sweet Potato)

Sweet potatoes baked nicely and slowly by using charcoal in Tokoname's special ceramic baking pipes boast plenty of sweetness. In the summer, be sure to try the Hiyashi Yaki-Imo (chilled baked sweet potato) or Yaki-Gela, which is a baked sweet potato topped with gelato!

Contact: ☎ 090-9897-6843 2-88 Sakaemachi, Tokoname City Open: 10:00–17:00 Closed: Irregular holidays Access: 4-min. walk from Grüün “Tojiki Kaikan” (Ceramics Hall) bus stop Parking: 6 spaces

MAP A-8

Attention!

If you are visiting facilities without parking spaces or if a facility's parking spaces are full, please park at Tojiki Kaikan (Ceramics Hall) or Yakimono Sanpomichi (Pottery Footpath) Parking. For the locations of the facilities listed in this booklet, please check the MAP on the back cover (p. 16).



1 Dendenzaka artistically inlaid with Kesawa ring-shaped bases that were used for firing ceramic pipes. The sidewalk is filled with shochu (Japanese distilled spirit) bottles.
2 3 4 Sightings to be seen at various spots on Yakimono Sanpomichi.



Don't forget to check out the take-out delights!

Lunch available!

nuu

A variety of daily lunch specials, such as deli plate and curry are offered depending on the day and the chef in charge. The chef of the day is posted on the website, so be sure to check in advance!

Contact: ☎ 0569-89-8755 2-73 Sakaemachi, Tokoname City Open: 10:00–16:00 *Lunch available from 11:30 Closed: Thurs. through Sat. Access: 3-min. walk from Grüün “Yakimono Sanpomichi Nishiguchi” (Pottery Footpath West Entry) bus stop Parking: N/A

MAP A-8

A hideaway shared kitchen café



An example of the lunch at nuu kitchen: Tonjiru and Tenmusu Ormusubi Plate (a miso soup with pork and veggies, and rice balls with tempura) (¥1,200)

3



The rustic appeal of the natural clay texture

Katakuchi (Spouted serving bowl): ¥3,300
By Souji TSURUMI
A hand-built katakuchi full of warmth. Dripless, easy to pour, and highly functional.

morrina

MAP B-8

A retailer with a selection of Tokoname ware that enrich everyday life. Works by local artists are displayed according to the technique and the period.

Contact: ☎ 0569-34-6566 7-3 Sakaemachi, Tokoname City Open: 10:00-17:00 Closed: Wed.
Access: 5-min. walk from Grüün "Tojiki Kaikan" (Ceramics Hall) bus stop Parking: N/A



Small pieces of craftwork that can be worn casually

Tokoname Ware Brooch
Flower: ¥2,860 By Kazuka TAKECHI
Strawberry: ¥1,760 By Izumi CHANCEY
The lovely feel and texture of these brooches are the result of the materials and techniques of Tokoname ware. Pin one to your clothes or bag as an accent.

ni:no

MAP A-7

The first floor is packed with potteries, stationery, kitchen goods and other general items, and a café is located on the second floor.

Contact: ☎ 0569-77-0157 1-1 Togo-cho, Tokoname City Open: 10:00-17:00 (café opens at 11:30, L.O. 16:30) Closed: Thurs. (open if holiday) Access: 1-min. walk from Grüün "Tojiki Kaikan" (Ceramics Hall) bus stop Parking: public parking available



Full of fancy items!
Take some home and be happy

#Tokonameyaki #Fancygoodslover
#souvenir #treatyourself

Once-in-a-lifetime, "one-of-a-kind" items found on the Pottery Footpath

Exceptional Items

The Yakimono Sanpomichi (Pottery Footpath) is filled with items made by ceramic artists and creators who put their heart and soul into each piece of their work!
Take home something uniquely "Tokoname" as a memento of your trip!



No two items are alike Find your favorite one

Nerikomi (Marbled) Mug & Saucer
Mug: ¥3,100/ Saucer: ¥2,400
Using fine clay, every detail is delicately crafted. Comfortable to the touch, light, and easy to hold.

Issei Touen (Issei Pottery Shop)

MAP B-9

About 7 different types of ceramic works are on display, including the Nerikomi (marbled) series. You are lucky if you see the store cat!

Contact: ☎ 0569-35-2205 7-33 Sakaemachi, Tokoname City Open: 11:00-16:00 on weekdays; 10:30-17:00 on weekends & holidays Closed: Irregular holidays Access: 5-min. walk from Grüün "Yakimono Sanpomichi Nishiguchi" (Pottery Footpath West Entry) bus stop Parking: N/A



Dripless & pleasant to the touch Experience the scrupulous attention of an artisan

Tanka Hirokuchi Kushime Kyusu (Carbonized wide-mouth comb-pattern teapot): ¥11,000
By Hiroshi KOIE

A staple product whose shape has not been changed for more than 20 years. The tea strainer is made of ceramic, too, so as not to affect the flavor of the tea.

SPACE Tokonabe

MAP A-9

A Tokoname ware store specializing in kyusu (teapots). A wide range of products from those suitable for daily use to masterpieces are available. All items are made by Tokoname artists.

Contact: ☎ 0569-36-3222 6-204 Sakaemachi, Tokoname City Open: 10:00-17:00 Closed: Irregular weekday holidays Access: 4-min. walk from Grüün "Yakimono Sanpomichi Nishiguchi" (Pottery Footpath West Entry) bus stop Parking: N/A



hinome accessory
From ¥1,200
Accessories made from the wood that had been lying unused in a vacant old folk house. Beautiful craftwork in which various patterns match well with the wood grain.

Born of the passage of time, the earrings & brooches are one-of-a-kind in the world

Mawaru Zakkaten (Mawaru Upcycle Store)

MAP A-8

Offers an assortment of upcycled products that add new value to waste materials that would otherwise be thrown away.

Contact: ☎ N/A 2-87 Sakaemachi, Tokoname City Open: 9:30-17:00 Closed: Irregular holidays Access: 3-min. walk from Grüün "Tojiki Kaikan" (Ceramics Hall) bus stop Parking: N/A



The one and only glass of my own to serve me for years to come

DOMAKI Glass
¥3,850
The combination of black and bright green catches the eye. There are numerous combinations of colors and shapes, so find the "one and only" that appeals to you.

GLASSWORKS-LUCK

MAP B-8

All products in the store are completely original. Each one is unique and has a lot of character. Glass blowing experience is also available with a reservation.

Contact: ☎ 0569-35-5992 3-128 Sakemachi, Tokoname City Open: 10:00-17:00 Closed: Thurs. (or the next day if holiday) Access: 4-min. walk from Grüün "Tojiki Kaikan" (Ceramics Hall) bus stop Parking: 2 spaces



Find the Kesawa ring-shaped bases and be happy

Strolling Along the Yakimono Sanpomichi (Pottery Footpath)

#LuckyCat #Dokanzaka
#happycomeontokoname

Brick chimneys, a ceramic pipe hill, and more!



Tokoname Tojiki Kaikan (Ceramic Hall)

The starting point of the Pottery Footpath. You can obtain an area map or shop for Tokoname ware here.
Contact: ☎ 0569-35-2033 3-8 Sakaemachi, Tokoname City Open: 9:00-17:00 Closed: year-end & new-year holidays Access: 1-min. walk from Grüün "Tojiki Kaikan" (Ceramics Hall) bus stop Parking: 40 spaces

MAP A-7



"Toko-nyan" the Guardian Cat

A giant lucky cat, measuring 3.8 meters high and 6.3 meters wide, peeking out from the top of the wall to watch over the town.
Access: 4-min. walk from Grüün "Tojiki Kaikan" (Ceramics Hall) bus stop Parking: N/A

MAP A-7



Tokoname Manekineko-dori (The Lucky Cat Street)

Thirty-nine ceramic lucky cats beckoning fortune (happiness) will greet you along the street from Meitetsu Tokoname Station to Tokoname Tojiki Kaikan (Ceramic Hall).
Access: 1-min. walk from Grüün "Tojiki Kaikan" (Ceramics Hall) bus stop Parking: N/A

MAP A-7



Dokanzaka (Ceramic Pipe Hill)

Old ceramic pipes of Tokoname were cover the walls. The ground is inlaid with numerous Kesawa ring-shaped bases that were used to support ceramic pipes during firings.
Access: 3-min. walk from Grüün "Yakimono Sanpomichi Nishiguchi" (Pottery Footpath West Entry) bus stop Parking: N/A

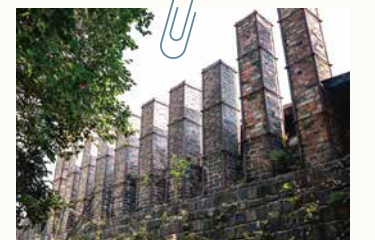
MAP A-8



Kaisendonya Takita-ke (Shipping Agent Takita Family Residence)

The restored former residence of the Takita family, who operated a shipping business from the Edo period (1603-1867) to the Meiji period (1868-1912). Japanese ship models and maritime history are on display.
Contact: ☎ 0569-36-2031 Open: 9:30-16:30 Closed: Wed. Admission: ¥300 Access: 2-min. walk from Grüün "Yakimono Sanpomichi Nishiguchi" (Pottery Footpath West Entry) bus stop Parking: N/A

MAP A-8



Noborigama (Toeigama) (Climbing Kiln [Toe Kiln])

The ten chimneys in different heights are quite impressive. At the adjacent Noborigama Hiroba Tenji Kobokan (Climbing Kiln Plaza Gallery and Studio), visitors can try their hand at painting Tokoname ware (from ¥750).
Contact: ☎ 0569-35-0292 (Noborigama Hiroba Tenji Kobokan (Climbing Kiln Plaza Gallery and Studio)) Open: 10:00-16:00 Closed: Wed., year-end & new-year holidays Access: 3-min. walk from Grüün "Yakimono Sanpomichi Nishiguchi" (Pottery Footpath West Entry) bus stop Parking: N/A

MAP A-9

Attention! If you are visiting facilities without parking spaces or if a facility's parking spaces are full, please park at Tojiki Kaikan (Ceramics Hall) or Yakimono Sanpomichi (Pottery Footpath) Parking. For the locations of the facilities listed in this booklet, please check the MAP on the back cover (p. 16).



Once you get the hang of it, it's easy!

1 Picture what you want to make and focus



1 You may find throwing a bit difficult at first, but it will add to your joy when the shape turns out the way you want. 2 A unique lampshade making class is also available (¥3,500/ 60 min.).

Kakuzan Toen (Kakuzan Pottery Shop)

MAP B-8

Try your hand at pottery on a professional electric wheel and make two pieces of work from the options of cups, bowls, and single-flower vases. Experienced craftspeople will guide you through the process in detail, so you can create beautiful works even if you are a first-timer.

Contact: ☎ 0569-34-4152 3-116 Sakaemachi, Tokoname City Open: 9:00–17:00 Closed: Irregular holidays Access: 5-min. walk from Grüun "Tojiki Kaikan" (Ceramics Hall) bus stop Parking: 6 spaces

Info. on the Experience

Electric Pottery Wheel (Throwing) Experience

Hours	10:00–17:00 (cut-off 16:00)
Reservation	required (same-day booking OK)
Book via	phone, Jalan Activities website
Time required	45 min.
Fee	¥3,500

What colors should I pick?
Paint the lucky cat and make it adorable



1

#PotteryMakingExperience

#Yakimono

#Tokonameyaki

Create your own Tokoname ware and be happy

Same-day Booking OK!

Pottery Making Experience

On Yakimono Sanpomichi (Pottery Footpath)

Tokoname offers a wide variety of pottery making experiences, such as electric pottery wheel (throwing), hand-building, slab building, and painting. Each facility offers different experience, so pick the one that suits you best.

Kura no Toilet (Toilets in Japanese Storehouse)

The Dokanzaka Rest House has a collection of western-style private bathrooms from three toilet manufacturers: Janis, LIXIL, and TOTO! It is also unique in that the toilets available for men and women are switched weekly. Try using them while strolling along the Pottery Footpath.



Dokanzaka Rest House

MAP A-8

Pick your favorite from more than 10 types of items, including lucky cats, and paint it as you like. Your work will be fired and finished in about a month. If you'd like to take your work home with you on the same day, try the painting experience using markers (lucky cat only).

Contact: ☎ 0569-77-6012 4-120 Sakaemachi, Tokoname City Open: 10:00–16:00 Closed: year-end & new-year holidays Access: 3-min. walk from Grüun "Yakimono Sanpomichi Nishiguchi" (Pottery Footpath West Entry) bus stop Parking: N/A

1 A wide variety of paint colors are available. 2 Done! Can't wait to see the finished work delivered! 3 You can draw illustrations, too

Info. on the Experience

Pottery Painting Experience (lucky cats, plates, bowls, mugs, and more)

Hours	10:00–16:00 (cut-off 15:30)
Reservation	not required (Required for a group of 8 or more)
Book via	phone, Jalan Activities website
Time required	30–60 min.
Fee	from ¥800 *The lucky cat in the picture is ¥1,200

Takawogama

MAP A-9

A slow wheel turned by hand will be used instead of an electric wheel. Freely create whatever shape you like, by pinching and smoothing the clay with your fingertips. The dinosaur making class (¥3,000) is also popular.

Contact: ☎ 080-6685-9183 6-134 Sakaemachi, Tokoname City Open: 11:00–17:00 *Opens at 10:00 on weekends & holidays Closed: Irregular holidays Access: 3-min. walk from Grüun "Yakimono Sanpomichi Nishiguchi" (Pottery Footpath West Entry) bus stop Parking: N/A

Info. on the Experience

Hand Building Class

Hours	11:00–17:00 (cut-off 16:00)
Reservation	not required (but recommended as the place closes on irregular holidays)
Book via	phone, Instagram DMs, Jalan Activities website
Time required	15–120 min.
Fee	¥3,000

Get excited with the feel of the clay, it's time to showcase your originality!



1



1 The rotation speed of the wheel can be adjusted by you. You can create any shape you like, even making holes! 2 Forming a shape from a lump of clay is quite a rewarding experience!

Check these out, too!

Experiences Available outside the Yakimono Sanpomichi (Pottery Footpath) Area!

Have fun picking out colors and shapes!
What kind of pottery shall I make?

TOKONAME STORE

MAP A C-4

A pottery making experience using a technique called slab building. It is a simple way of making pottery using molds. Enjoy decorating your work with stamps. The color can be chosen from 7 options.

Contact: ☎ 0569-36-0655 6-70-2 Haramatsu-cho, Tokoname City Open: 11:00–18:00 Closed: Wed. (open if holiday) Access: 5-min. walk from Grüun "Tojiki Kaikan" (Ceramics Hall) bus stop Parking: 8 spaces

Info. on the Experience

Tokoname Ware Pottery Making Experience (Slab building)

Start time	11:00; 13:00; 15:00; 17:00
Reservation	required (same-day booking OK)
Book via	phone, e-mail, the reservation form on the website, Jalan Activities website
Time required	90 min.
Fee	from ¥3,300/ adult; from ¥1,980/ child (elementary school age or younger)



1

1 Making pottery by pressing the clay against the mold. The process is simple enough and suitable for beginners. A family plan is also available. 2 Pottery products created by Yamagen Toen (Yamagen Pottery Park), their own company, are sold in a separate building.



2

INAX MUSEUMS

MAP A C-5

Contact: ☎ 0569-34-8282 1-130 Okuei-cho, Tokoname City Open: 10:00–17:00 (last entry 16:30) Closed: Wed. (open if holiday), year-end & new-year holidays Admission: ¥700/ adult; ¥500/ high school & university student; ¥250/ elementary & junior high school student *Free if participating in the workshops only Access: 2-min. walk from Chita Bus "INAX Live Museum-mae" stop Parking: 80 spaces



Freely mix and match colorful tiles



Tougaku Koubou (Tiling Workshop)

Adorn photo frames and/or clips with tiles to create an artwork of your own. A wide variety of mosaic tiles are available. No reservation is necessary, so just drop in and have fun with the tile art.

Info. on the Experience

Free Time Crafting

Hours	10:00–17:00 (cut-off 16:00)
Reservation	not required
Time required	30–60 min.
Fee	¥900/ item



Shiny Clay Ball Making that engrosses children and adults alike

Tsuchi Doronko-kan (Clay Works)

Balls of pottery clay are shaved, colored (in the color of your choice), and polished into shiny clay spheres! Check out the theme color (limited color) which varies from season to season.

Info. on the Experience

Shiny Clay Ball Workshop

Start time	10:00; 13:00; 15:00
Reservation	*Check the workshop schedule on the website required (please book at least 30 min. prior to the start time via website)
Book via	the reservation form on the website; Jalan Activities website
Time required	60 min.
Fee	¥900/ clay ball

Learn more about Tokoname ware!

Tokoname Tounomori (Tokoname Pottery Forest)

This municipal complex consists of a Museum, a Ceramics Research Institute, and a Training Workshop. Several ceramic benches exhibited at the Expo '70 (Japan World Exposition, Osaka, 1970) are scattered on the ground. Can you find out how many there are?



Museum

MAP A C-4

Learn about the history of Tokoname ware in this museum. The highlight of the museum would be the "Kame" (pots) displayed at the connection area of the permanent exhibition. The way the classic works of Tokoname ware are lined up in a chronological order of production is quite impressive.

Contact: ☎ 0569-34-5290 4-203 Segi-cho, Tokoname City Open: 9:00–17:00 Closed: Mon. (or the next day if holiday), year-end & new-year holidays Admission: free Access: 7-min. walk from Chita Bus "INAX Live Museum-mae" stop Parking: about 30 spaces



Ceramics Research Institute

MAP A C-4

The institute's building, designed by the late renowned architect, Sutei Horiguchi, and registered as tangible cultural property of Japan, is beautiful with its large overhanging roof eaves and the gradation of purple mosaic tiles covering the exterior walls. Works of Tokoname ware are on display inside the building.

Contact: ☎ 0569-35-3970 7-22 Okujo, Tokoname City Open: 9:00–17:00 Closed: Mon. (or the next day if holiday), year-end & new-year holidays Admission: free Access: 7-min. walk from Chita Bus "INAX Live Museum-mae" stop Parking: about 10 spaces

And More!

Visit the official website of Tokoname Tourism Association to find out more about the facilities that offer pottery making experiences





The outdoor area is installed with playground equipment that facilitates body movements. Try again and again!

Full of ingenious items designed to get both parents and children absorbed into play!

In the indoor play area, children and babies can enjoy physical play regardless of the weather.

Moovoi Tokoname Grün Tokoname

MAP A C-4

Moovoi Tokoname is a facility where children can play according to their developmental stages, and Grün Tokoname is one of the first admission-free parks opened in boat race stadiums throughout Japan. Both facilities have on-site Play Leaders at all times, facilitating children's play.

Contact: 4-111 Shinkai-cho, Tokoname City Access: 1-min. walk from Grün "Boat Race Tokoname" bus stop Parking: 2,098 spaces

[Moovoi Tokoname]... A
Contact: ☎ 0569-34-9931 Open: 10:30-16:50 in summer (Mar.-Sept.); 10:10-16:30 in winter (Oct.-Feb.) *Admission cycle: 160 min. (2 admissions) on weekdays, 80 min. (4 admissions) on weekends & holidays Closed: Irregular holidays Fee: ¥300/ adult (incl. ¥100 admission on race days); ¥300/ child

[Grün Tokoname]... B
Contact: ☎ 0569-34-9932 Open: 8:30-end of the last race (around 17:00) Closed: N/A Admission: free

Check this out, too!

Tokoname Boat Race

MAP A C-4

Since the opening of the new stands, the facility has been transformed into a place where families and first-timers can visit casually. Moovoi Tokoname and Grün Tokoname are located within the premises, and a food court and café are also available.

Contact: ☎ 0569-35-5211

Get the fresh Mentaiko (seasoned cod roe) that only a factory-outlet store can provide!



1 Museum where visitors can learn about the manufacturing process and history of Mentaiko through games and exhibits **2** Limited number of special Mentaiko items are on sale, too. The freshly made Mentaiko has an amazing granular texture!



Kanefuku Mentai Park Tokoname

A Mentaiko theme park where visitors can tour the Mentaiko factory and observe operations through the glass window. Special food items featuring Mentaiko can be tried at the food corner. The factory outlet store also offers a sampling of Mentaiko.

Contact: ☎ 0569-35-9900 1-25-4 Rinku-cho, Tokoname City Open: 9:30-17:30 on weekdays; 9:00-18:00 on weekends & holidays Access: 2-min. drive from "Rinku IC" of the Chita Odan Road Parking: 400 spaces

MAP A B-4



Dekitate Mentai (Freshly made Mentaiko) Mixed 400 g ¥2,250

Mentai Soft Cream (Mentaiko soft-serve) ¥360

Action-packed area for both children and adults! Put a smile on your family's face and be happy

#TokonameAttractions

#Activities

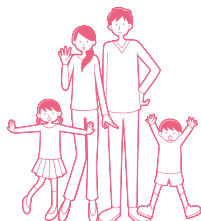
#ParadiseForParentsAndChildren

Shop, play, and be happy!

Places for Fun Activities

in Centrair & Rinku Area

Centrair & Rinku Area is an electrifying wonderland that can make both children and parents happy. Exciting attractions appear one after another! Play and shop away to your heart's content!



Convenient Community Bus service available for transportation!

The Community Bus Grün, an electric bus going around the city, is now operating free of charge. For more details, please refer to p. 16!



A variety of courses, from the one for beginners to the 8-meter-high one for more advanced, are available.



In addition to the Junior Go-Karts, Segway Go-Karts have been available since March 2022.

Wonder Forest Curio

An outdoor entertainment park is located at AEON Mall Tokoname, packed with exciting facilities such as Wonder Sky (an adventure ropes course), Wonder Jump (a large-scale trampoline park), and Sea Side Circuit (a 600-meter-long go-kart track)!

Contact: ☎ 0569-35-7500 2-20-3 Rinku-cho, Tokoname City Access: 1-min. walk from Grün "AEON Mall Tokoname" bus stop Parking: 3,500 spaces

[Wonder Sky] ... C

Contact: ☎ 0569-89-2740 Open: 11:00-17:00 (cut-off 16:00) on weekdays; 10:00-18:00 (cut-off 17:00) on weekends & holidays Closed: N/A Admission: ¥600/ 20 min. for KID's Course; ¥4,200 for Unlimited Course; and more.

[Wonder Jump] ... D

Contact: ☎ 0569-89-2740 Open: 11:00-17:00 (cut-off 16:30) on weekdays; 10:00-18:00 (cut-off 17:30) on weekends & holidays Closed: N/A Admission: ¥1,000/ 30 min.; ¥1,400/ 60 min.; ¥400/ accompanying guardian, etc. *¥300/ pair of specialized socks (mandatory)

[Sea Side Circuit] ... E

Contact: ☎ 0569-38-1224 Open: 12:00-20:00 on weekdays; 11:00-20:00 on weekends & holidays Closed: N/A Admission: ¥2,300 (incl. insurance) for Men; ¥1,650 (incl. insurance) for Women & Juniors; ¥500 for Kids Go Kart, etc.

*Facilities may be closed due to weather conditions.

MAP A B-5



Pilot Bear (brown) ¥2,530

Hamlet ¥1,098/ box

Normally sold individually by a box of 125 g, but here by a set of 4 boxes. New flavors available, too!

Smoothie ¥270
Flavors vary according to the seasons. Available at the food court.



Sushi Family-Mori (Sushi combo plate) ¥3,580/ 48 pcs
A popular item at Costco. The sashimi topping is quite thick and satisfying.

Costco Chubu Airport Warehouse

With the store's low prices, you can get a great deal just by shopping normally. The massive store space is to be explored in one sweep around, from the entrance to the exit.

Contact: ☎ 0570-200-800 1-25-14 Rinku-cho, Tokoname City Open: 10:00-20:00 Closed: New Year's Day Access: 1-min. drive from "Rinku IC" of the Chita Odan Road Parking: 911 spaces

MAP A B-4

You may never meet the same product again. Put the item in your basket if attracted!

Just bring yourself and enjoy the BBQ!
The photo below shows the Regular Course (¥3,850)



Relax and chill out in a luxurious space

Link del mar

Enjoy seafood paella and other authentic dishes at the BBQ space directly connected to the beach (Reservation required). Drinks and café menu items are available without reservation!

Contact: ☎ 0569-34-2525 2-37 Rinku-cho, Tokoname City Open: 10:00-20:00 (L.O. 19:30) Closed: Wed. & winter season (Dec.-Feb.) Access: 5-min. walk from Grün "AEON Mall Tokoname" bus stop Parking: 210 spaces

MAP A B-4

Cafe latté art From ¥486

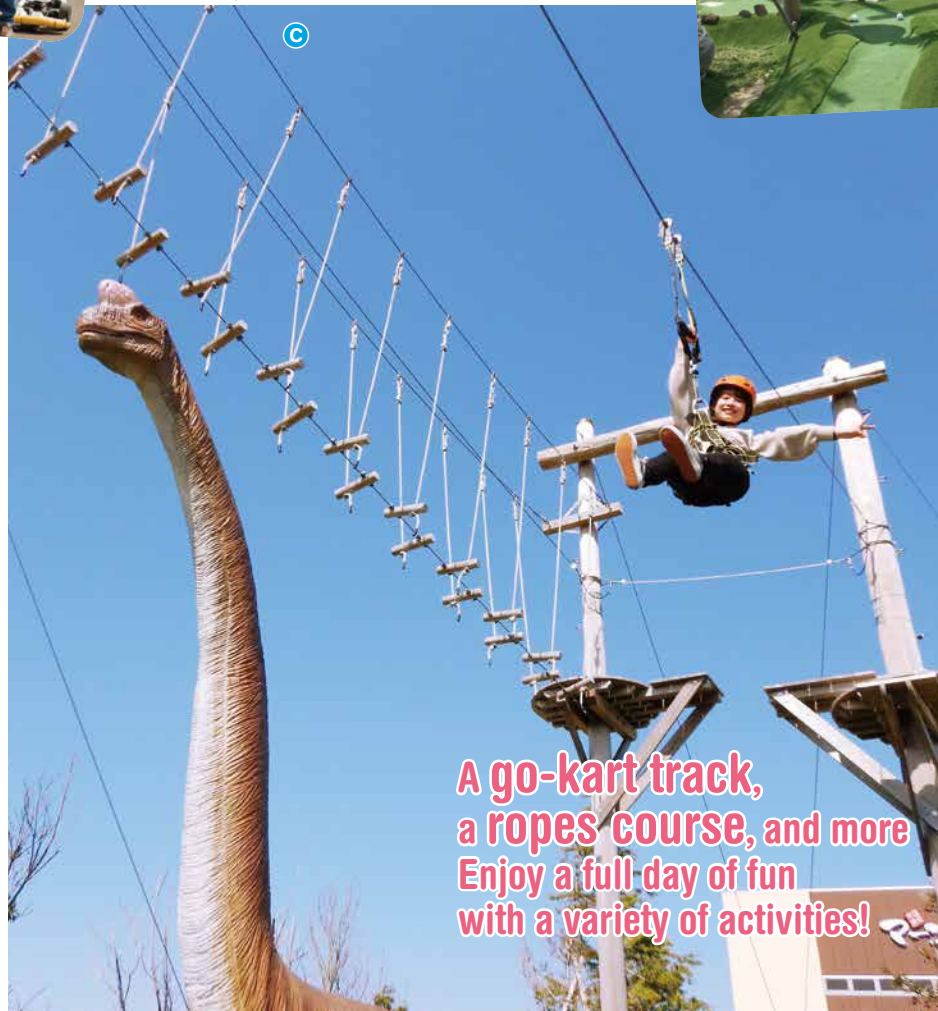


The Ibiza-themed space has the feel of an overseas resort.



Glamping style BBQ facilities. Enjoy a moment of luxury.

A go-kart track, a ropes course, and more Enjoy a full day of fun with a variety of activities!



Have a satisfying lunch and be happy ♡

Wholesome meals at
farmer's restaurants,
ocean-fresh seafood, branded beef...

Looks yum!

Instagrammable!!

#TokonameLunchSpot

#LocalDelicacies

#FarmersRestaurant

#TokonameDinnerSpot

Mealtimes in your trip provide precious opportunities to encounter local specialties/produce that can only be tried there. Enjoy dishes unique to Tokoname to your heart's content!

Delicacies Dishes in Tokoname

Tamago Nouka No Kitchen recipio (Egg Farmer's Kitchen recipio)

A restaurant run by an egg farm. The signature dish is of course, the omurice (fluffy omelet filled with fried rice). If you are so inclined, have it as a set menu (combo) and enjoy the specialty pudding, too!

Contact: ☎ 0569-37-0099 249-1 Ashibasama, Otani, Tokoname City Open: 10:00-17:00 Closed: Thurs.; 1st & 3rd Wed. Access: 5-min. walk from Grün "Kita Otani" bus stop Parking: 130 spaces

MAP A D-7

Check this out, too!

Also located on the site of Tamago Nouka No Kitchen recipio

Niwanopan

Opened on June 10, 2023, this bakery offers a variety of special items that use the bounty of eggs generously, including Purin-Pan (pudding bread) filled with homemade custard and Atsuyaki-Tamago (thick omelet) Burger!

Contact: ☎ 0569-77-3971



Shaved ice lavished with baked meringue and cream (¥1,680) is offered in summer. Enjoy the novel texture!

There's a bakery as well!



Cut into the rounded form and watch the runny egg overflow!



recipio tan-nou Set Menu (recipio's signature combo) ¥1,890

Check this out, too!

Also located on the site of Tamago Nouka No Kitchen recipio

Toretate Tamago No Mise Cocoterrace (Farm-fresh Eggs Shop Cocoterrace)

Fresh eggs and exquisite sweets can be purchased at this farm-direct store. The sought-after pudding can sell up to 1,000 cups a day, and the 24-hour egg vending machine has been popular, too.

Contact: ☎ 0569-36-7060

Tamago Ippai Pudding (Egg-rich pudding) ¥230

Take-out available!



The egg vending machines and sweets are well-received. They make perfect souvenirs, too!

The platter just about overflowing with fresh seasonal vegetables is sure to satisfy your appetite!



Power Salad Lunch with Roasted Chita Beef ¥1,980 *Incl. soup, dessert & soft drink



Dinner courses are also recommended. Why not enjoy the food with a glass of the restaurant's own wine, made 100% in Tokoname?

Spacious interior with a great sense of openness



SUNSET WALKER HILL

The hearty lunch is packed with tender Chita beef and seasonal vegetables harvested on the Chita Peninsula. The fruity house-made dressing is also delicious.

Contact: ☎ 0569-47-9478 130 Johakuda, Kanayama, Tokoname City Open: 11:00-21:00 (L.O. 20:30) Closed: Thurs. Access: 7-min. drive from "Tokoname IC" of the Chita Odan Road Parking: 30 spaces

Offers a spectacular view of Ise Bay Popular terrace seating

MAP A C-2



Check this out, too!

Also located on the site of SUNSET WALKER HILL

Tokoname Winery Neighborhood

A winery that handles everything from viticulture (winegrowing) to winemaking. More than 10 original wines are available. Visitors can taste and also purchase them at SUNSET WALKER HILL.

Contact: ☎ 0569-47-9478 (SUNSET WALKER HILL)

#TokonameDelicacies

Ocean-fresh! Gourmet Seafood

Seafood landed at local fishing ports is exceptionally fresh and fatty! The chefs, who know fish inside and out, will prepare the best seafood for you at a special local price!

Kaisen Sousaku Shubou Bay (Original Seafood Restaurant Bay)

A local favorite, the Kaisen-don Teishoku (¥2,340), is a bowl of rice brimming with a variety of sashimi. The fish ingredients vary from day to day, but all are fresh and tasty. The Bay Lunch (¥2,890) is also popular.

Contact: ☎ 0569-37-1170 13-1 Umebasama, Sakai, Tokoname City Open: 11:00-14:00; 17:00-21:00 Closed: Wed. & 2nd Tue. (or the next day if holiday); year-end & new-year holidays Access: 5-min. walk from Grün "Sakai" bus stop Parking: 20 spaces

MAP A D-9

An 8-course meal deal featuring fried prawn, seasonal sashimi, grilled fish, and more



Enjoy the delicious food and spectacular view, a double treat!

Ume-san's Course of the Month ¥3,610 *The photo is an example.

Maruha Shokudo Rinku Tokoname (Japanese Seafood Restaurant MARUHA at Rinku Tokoname)

The signature dish, fried prawn, is crispy and fragrant with juicy, tender flesh. The location is also excellent, with Ise Bay spread out before your eyes. Enjoy seafood dishes while looking out at the sea.

Contact: ☎ 0569-38-8108 3-9-5 Rinku-cho, Tokoname City Open: 11:00-15:00; 17:00-22:00; *10:40-22:00 on weekends & holidays Closed: Irregular holidays Access: 1-min. drive from "Rinku IC" of the Chita Odan Road Parking: 150 spaces

MAP A B-5

#TokonameDelicacies

An American diner in Tokoname Local Gourmet Burger

Tokoname's local gourmet burgers are a bit different from usual burgers popular as quick and easy food. From the ingredients to the serving dishes, they are first-class items filled with the local love! Enjoy the exceptional flavor to the fullest!

The chopped wasabi gives a kick to the flavor. Take a big bite!



Lucky Cats Burger Single: ¥2,000 Double: ¥2,700 *The picture shows a single-patty burger.

A full plate of fruits of the sea! Amazing value enough to make you return



Kaisen-don Teishoku (Seafood rice-bowl combo) ¥2,340

Includes a side dish, salad, miso soup, and Japanese pickles. Discover the delights of fresh fish!

A full lineup of items, including specialty conger eel dishes, tempura, and grilled fish are available.



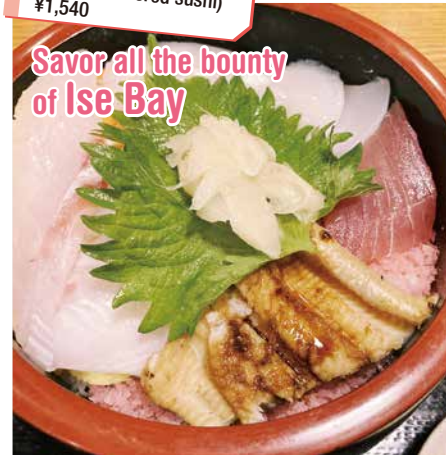
Sushi no Tatsumi (Sushi of Tatsumi)

A sushi restaurant frequented by locals. The restaurant serves seafood mainly caught in Mikawa Bay and Ise Bay, in rice bowls and nigiri (sushi). Be sure to try the Chitamae Sushi (¥3,300) featuring Chita produce!

Contact: ☎ 0569-42-1253 3-36 Shinmei-cho, Tokoname City Open: 11:00-14:00; 17:00-22:00 (L.O. 21:30) Closed: Wed. Access: 1-min. walk from Grün "Shimin Koryu Center" (Community Center) bus stop Parking: 4 spaces

Chitamae Chirashi (Chita's bounty scattered sushi) ¥1,540

Savor all the bounty of Ise Bay



A full array of ocean-fresh seafood is served on the seasoned flakes of shrimp landed in the ports of Ise Bay.

MAP A B-2

The calico lucky cat motif is the concept Sophisticated Japanese-style burger

Central Diner

Among all those original burgers made with local produce, the most recommended is this one: a patty made with 100% Chita beef, topped with dried bonito flakes, white onion, and nori seaweed flakes, together representing the lucky cat!

Contact: ☎ 0569-47-9002 2-91 Shinkai-cho, Tokoname City Open: 11:30-16:00 (L.O. 15:00); 18:00-23:00 (L.O. 22:00) *11:30-23:00 (L.O. 22:00) on weekends & holidays Closed: Tue. in Oct.-Feb. Access: 4-min. walk from Grün "Boat Race Tokoname" bus stop Parking: 14 spaces

MAP A B-4

The homemade demi-glace sauce with Hatcho Miso (100% soybean miso) is irresistible!
Try adding an onsen tamago (a soft-boiled egg akin to poached egg) to enjoy the change in flavor!

A hamburger steak made with Chita pork and Chita beef paired nicely with a crispy pie



Chita Pork Lunch
¥3,050

Bistrot Barfleur

A casual bistro offers special French course meals, such as the famous Pasta de Crab (Swimming crab pasta) Lunch and the Chita Pork Lunch with an addictive texture. The photo-worthy homemade desserts are also something to get excited about.

Contact: ☎ 0569-58-5448 2-145 Nijinooka, Tokoname City Open: 11:00-22:00 Closed: N/A (occasionally closed for maintenance) Access: 1-min. walk from Grüün "Taya Koen" (Taya Park) bus stop Parking: 10 spaces



Also try the Parfait Lunch (¥3,180) filled with seasonal fruits!



MacaBon (¥780), a homemade gelato sandwiched in between macarons, is available for takeout.

#TokonameDelicacies

Great lineup of places Quality Branded Meats

Brand-name meats such as Chita beef and Chita pork are best served at their place of origin. Taste the first-class meat at a reasonable price and have a satisfying lunch time!

While supplies last! Sumptuous combination of Chita Beef & Prawn Tempura

Jizakana Ryori Unagi Maruichi (Local fish & eel specialty restaurant Maruichi)

Chita beef marinated in the eel sauce, which has been kept topped up for years, is melt-in-your-mouth goodness, and the hearty tempura is extra crispy! The reasonable price is also appealing.

Contact: ☎ 0569-36-0139 5-95 Haramatsu-cho, Tokoname City Open: 11:00-14:30 (L.O. 14:00) *Dinner available upon reservation. Closed: Tue. Access: 2-min. walk from Grüün "Tojiki Kaikan" (Ceramics Hall) bus stop Parking: 8 spaces

MAP A C-4

Quantities are limited, so they may sell out as soon as the store opens. It is a good idea to come early!



Chita-Gyu Ebi-Ten Don (Rice-bowl topped with Chita beef & prawn tempura)
¥1,650

Despite its surprisingly dark color, the soup has a traditional comforting taste.

Kyotei Ramen (Boat Race Ramen) (with pickled plum rice ball) "Boat" ¥700



Served in eye-catching, boat-shaped bowls This is Tokoname black ramen!

Chayatei

The menu offers a wide variety of items, from the standard Tsuke-soba (dipping noodles) to those with unique soy milk-based dipping soup. The broth is slowly cooked for two days, and the local produce and seasonings are carefully sourced within the prefecture!

Contact: ☎ 0569-35-3184 1-98-4 Shinkai-cho, Tokoname City Open: 11:00-14:00; 18:00-21:00 (L.O. 20:30) *Will be closed when the soup runs out (items will be off the menu from the one for which prepared ingredients run out) Closed: Mon., year-end & new-year holidays Access: 5-min. walk from Meitetsu "Tokoname Station" Parking: 12 spaces

MAP A C-4

Uwotoyo

The Kyotei Ramen (Boat Race Ramen) made with tamari soy sauce and thick slices of Japanese braised pork belly makes quite an impression! If you ask for the "boat," the ramen will be served in a bowl reminiscent of a boat.

Contact: ☎ 0569-35-2863 6-37 Koiehonmachi, Tokoname City Open: 11:00-14:30; 17:00-18:30 Closed: Tue. Access: 1-min. walk from Meitetsu "Tokoname Station" Parking: 12 spaces

MAP A C-4

The soup with the scent of the ocean pairs well with the extra-thick noodles



Contains a local specialty seaweed called akamoku. Served in Tokoname ware.

Akamoku-iri Shio Tsuke-soba (noodles with salty dipping soup containing akamoku)
¥1,000

#TokonameDelicacies

Craft beer, local sake...

Hot Night Spots Offering Good Drinks

Tokoname is only 30 minutes away from Nagoya by Limited Express train. Why not relax and enjoy some local sake and food before your journey?

Juicy steaks make the beer taste even better!



T-Bone Steak (100 g) ¥1,947

Savor both sirloin and filet steaks at one time.



A big container is the landmark. Conveniently located just a 2-minute walk from Tokoname Station.



Craft beer tasting is also available for a fee. The brands vary from day to day!

BUTCHERS FACTORY

Committed to craft beers, this spot offers various brands according to the season. A wide variety of course meals as well as individual dishes are available, making the beer taste even better!

Contact: ☎ 0569-47-9998 5-93 Koiehonmachi, Tokoname City Open: 17:00-23:00 (L.O. 22:30) Closed: Tue. Access: 2-min. walk from Meitetsu "Tokoname Station" Parking: 8 spaces

MAP A C-4



Anago no Tempura (Conger eel tempura)
¥980



Assorted Sashimi From ¥1,500 (varies by day)
*The dish in the photo is ¥1,880

Enjoy the dishes that vary from season to season. The menu and prices are subject to change depending on availability.

*The menu items shown may not be available due to short supply.



Chita Beef Steak (150 g) ¥2,480
*Limited to dinner time



Try to get a seat at this chic bar & bistro



An example of cocktails. "One Drink System" in place. Please purchase at least one drink during dinnertime (cover charge: ¥550). *Cocktails are served only during dinnertime.



The interior retains the atmosphere of the original kiln, evoking a wondrous sensation.

Bar & Bistro Kyouei-Gama

The Kyouei-Gama (Kyouei Kiln) fired ceramic pipes in Tokoname for three eras, from Meiji (1868-1912) to Taisho (1912-1926) and Showa (1926-1989). At this renovated kiln, enjoy a conversation with the owner with a cocktail in hand.

Contact: ☎ 0569-34-7786 2-88 Kitajo, Tokoname City Open: 11:00-14:30 (L.O. 13:30); 17:00-24:00 (L.O. 23:00) Closed: Irregular holidays Access: 2-min. walk from Meitetsu "Tokoname Station" Parking: 20 spaces

MAP A C-4



Every time you visit, a new flavor is waiting

11 beer brands available at all times Select the one that suits your taste!



Fish & Chips
¥1,180

The best snack to go with beer. Crispy and scrumptious!



Renovated old shed. The calm atmosphere is cozy and comfortable.

English Pub

A wide selection of craft beers mainly from the UK and other European countries are available. Enjoy the beer with pizza baked in a stone oven or handmade fish & chips made with seasonal white fish from Ise Bay!

Contact: ☎ 0569-35-9981 3-112 Shinkai-cho, Tokoname City Open: 16:00-24:00 (L.O. 23:30) Closed: Sun. Access: 3-min. walk from Meitetsu "Tokoname Station" Parking: 7 spaces

MAP A C-4

Local sake and soba (buckwheat noodles) The shochu (Japanese distilled spirit) with sobayu (the leftover water after cooking soba) cocktail stirs the curiosity, too!



Assorted Sashimi From ¥1,500 (varies by day)
*The dish in the photo is ¥1,880

Enjoy the dishes that vary from season to season. The menu and prices are subject to change depending on availability.



Try the homemade stone-ground soba noodles!

Izakaya Koyoan

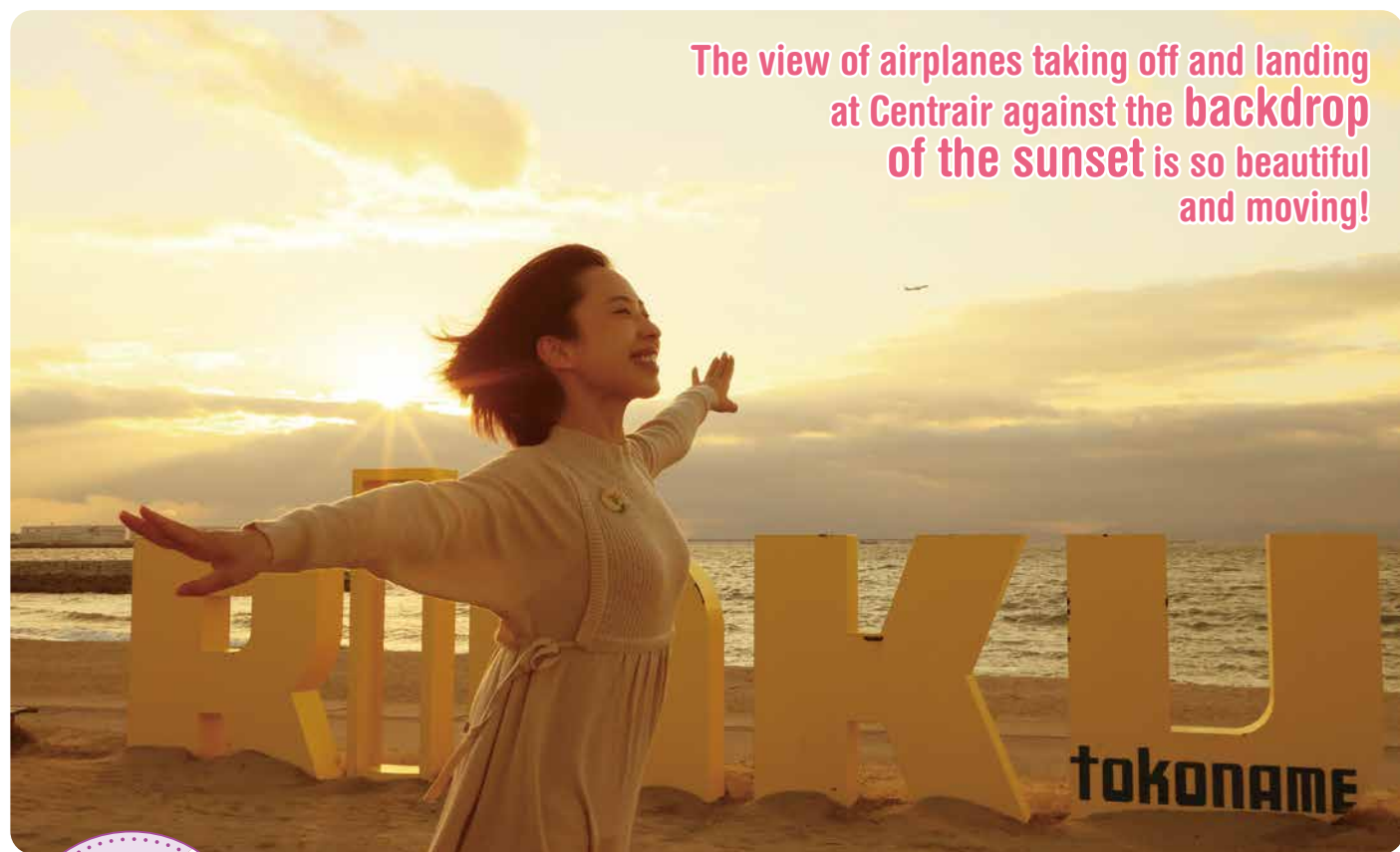
An izakaya (Japanese tavern) run by a soba shop. Committed to the use of local produce, the chefs serve food made with local fish and vegetables purchased at the market. Don't forget to finish off your meal with a bowl of freshly ground, made, and cooked soba noodles!

Contact: ☎ 0569-34-9006 3-156 Shinkai-cho Tokoname City Open: 11:30-14:00; 17:30-23:00 Closed: Mon. (the next day if holiday) Access: 4-min. walk from Meitetsu "Tokoname Station" Parking: 10 spaces

MAP A C-4

Menu items served on Tokoname-yaki (Tokoname ware) plates available.

Menu items featuring Chita Peninsula produce available.



The view of airplanes taking off and landing at Centrair against the backdrop of the sunset is so beautiful and moving!

Be healed by the ethereal beauty and be happy ♡

Sunset Watching at Centrair & Rinku Area

Tokoname, located on the west coast of the Chita Peninsula, is a perfect location for viewing the sunset. Bring your camera to capture the dramatic sunset!

Check this out, too!

Spectacular Sunset Spot

The orange color reflected in the water is stunning

Sakai Beach

Located in the southernmost part of Tokoname City. If the timing is right, you will be able to see the collaboration between the airplanes taking off/ landing and the setting sun. The area is also popular as a beach during the summer.

Contact: ☎ 0569-34-8888 (Tokoname City Tourism Plaza [Tourist Information Center]) Sakai Kaigan, Tokoname City Access: 14-min. walk from Grün "Sakai Chuo Hiroba" bus stop Parking: approx. 30 spaces at all times; approx. 50 spaces only when the beach is open (Parking fee will be charged ¥1,000 per car/day on the weekends in May–Aug.)

Mysterious & ever-changing scenery

The view from the Tenshu (Keep) is breathtaking

Site of Ono Castle (Shiroyama Park)

This is the site of the castle where Ogo, the mother of Tokugawa's third shogun, Iemitsu, first married. There is now an observatory resembling a castle keep, offering a panoramic view of Ise Bay.

Contact: ☎ 0569-34-8888 (Tokoname City Tourism Plaza) Shiroyama-chinai, Kanayama-aza, Tokoname City Open: Observation deck / 9:00–17:00 *until 16:00 in Nov.–Feb. Access: 7-min. walk from Grün "Miyayama Kokaicho" bus stop Parking: 100 spaces



MAP A D-9



MAP A C-1

Be captivated by the sunset over the Suzuka Mountains

Ono Beach

Ise Bay spreads out before your eyes, and the Suzuka Mountains can be seen in the distance. This place is known as a sunset viewpoint, and the sunset over the mountains is breathtakingly beautiful.

Contact: ☎ 0569-34-8888 (Tokoname City Tourism Plaza [Tourist Information Center]) Ono Kaigan, Tokoname City Access: 7-min. walk from Meitetsu "Onomachi Station" Parking: 50 spaces (paid)

Mt. Takasago, the highest peak in the city The sunset view from the observatory is spectacular

Takasagoyama (Takasagoyama Park)

Located close to Tamago Nouka No Kitchen recepio (Egg Farmer's Kitchen recipe) (p. 10), the observatory overlooks Ise Bay and Chubu Centrair International Airport. The view from the highest point in the city, 87 meters above sea level, is spectacular.

Contact: ☎ 0569-34-8888 (Tokoname City Tourism Plaza) Takasago, Otani, Tokoname City Access: 10-min. walk from Grün "Kita Otani" bus stop Parking: 20 spaces



MAP A B-1



MAP A E-7

Tokoname Rinku Seaside Green Space Tokoname Rinku Beach

The best place to view the sunset is from near the RINKU monument, and the best time would be about 30 minutes before the sunset. The beauty of the sky creating a color gradation from orange to purple is beyond description. The view from the 2nd floor of the beach café is also recommended.

Contact: ☎ 080-2632-7228 2 Rinku-cho, Tokoname City Open: 24 hrs. Closed: N/A Access: 5-min. walk from Grün "AEON Mall Tokoname" bus stop Parking: 205 spaces (¥500/visit in Nov.–Mar.; ¥1,000/visit in Apr.–Oct.) *Parking available 7:00–22:00

MAP A B-4



Tourist information and pamphlets are available here!

Machi No Eki Tokoname-yaki Yamatane (Tokoname Ware Yamatane)

A Tokoname ware specialty store, boasting one of the largest selection of works available for sale. The pottery class can accommodate up to 130 people and offers four types of workshops: electric wheel pottery making (throwing), hand-building, painting, and hand and footprint making.

Contact: ☎ 0569-35-3233 7-56 Okujo, Tokoname City Open: 9:00–17:00 Closed: N/A Access: 1-min. walk from Chita Bus "Nagamine" bus stop. Parking: 50 spaces

MAP A C-4

Tokoname Yasai Mura (Tokoname Vegetable Village)

The store is filled with vegetables picked in the morning. Local fish shipped directly from Toyohama Fishing Port as well as Tokoname's specialty products are available. You may at times find some unusual items sold here.

Contact: ☎ 0569-56-9423 7-7 Sakaemachi, Tokoname City Open: 8:30–18:00 Closed: N/A Access: 4-min. walk from Grün "Tojiki Kaikan" (Ceramics Hall) bus stop Parking: 20 spaces

MAP A C-4

Tokoname Milk Ice Cream ¥321

Local Tokoname milk is made into ice cream. It tastes rich yet has a refreshing aftertaste. You'll find it finished in no time.



Ebi Senbei (Shrimp crackers) from ¥346 (Varies by flavor)

The whirlpool shrimp crackers made with seaweed from the Chita Peninsula and the "Ebi Homare" (shrimp of honor), made crispy and perfect for snacking, are two of their popular products.

Fig around ¥350

*Depends on the season Tokoname is one of the top 3 producers of figs in the prefecture. The fruit is in season from August to September, and it is filled with comforting sweetness.

Teapot ¥3,300

A long-selling Tokoname ware product with a beautifully streamlined design and ease of use. Available at Kyusu to Utsuwa Isobe.

Tokoname Ware Wholesale Cooperative CeraMall

A shopping mall with 12 pottery specialty stores. Those items that fit your lifestyle may be waiting to be found here!

Contact: ☎ 0569-43-7111 99 Kamisuhara, Kanayama, Tokoname City Open: 9:00–17:00 *Varies by store Closed: N/A Access: 5-min. drive from "Tokoname IC" of the Chita Odan Road Parking: 300 spaces (public)

MAP A C-3

#TokonameSouvenirs

#LuckyCat

#LocalSake

Must-buy items in Tokoname

The Souvenirs

Here are a wide range of selected souvenirs, from standard items to those unique to Tokoname, and then to rare gems that you might want to keep on hand! Find the ones that appeal to your heart!



Toilet no Monaka/ Saichu ¥345 each

The realistic toilet bowl-shaped monaka wafers designed with 3D CAD, and the red bean paste that you fill yourself have created a buzz on social media! The packaging gets the attention, too!

Ohkura Mochi

A Japanese confection store specializing in rice cakes relying solely on Chita Peninsula produce. The glutinous rice is grown by a local contract farmer. Their sweets shop offers a fluffy shaved ice which is also a must-try!

Contact: ☎ 0569-35-2676 2-2-1 Koiehonmachi, Tokoname City Open: 9:00–18:00 (L.O. 17:00/Entry closed) Closed: Mon. (or at a later date if holiday) Access: 10-min. walk from Meitetsu "Tokoname Station" Parking: 35 spaces

MAP A C-4



Aji-no-Yakata Limited Junmai Ginjo Hanafugetsu 720 ml ¥1,200

An original Junmai Ginjo product, made from the standard Nenohi Ginjo, "Hanafugetsu", as an Aji-no-Yakata limited edition. Features a clean, crisp taste.

Morita Aji-no-Yakata

Inside the renovated 180-year-old brewery, the process of making sake and miso is introduced on video. Many original products are also available.

Contact: ☎ 0569-37-0733 10 Wakihamma, Kosugaya, Tokoname City Open: 10:00–16:00 Closed: Tue., Wed., Bon Festival, year-end & new-year holidays Access: 8-min. walk from Grün "Aji-no-Yakata-guchi" (Aji no Yakata Entry) bus stop Parking: 30 spaces

MAP A D-8

Sawada Sake Brewery

A brewery's outlet store operated by the brewer of Chita's local sake. The lineup ranges from Hakurou's standard products to seasonal limited items. Brewed seasonings are must-buy, too!

Contact: ☎ 0569-35-4003 4-10 Koba-cho, Tokoname City Open: 10:00–16:30 Closed: Sun. & holidays Access: 2-min. walk from Grün "Koba" bus stop Parking: approx. 10 spaces

MAP A D-6



Special Junmai Sake Hakurou 720ml ¥1,507

A gem made from local brewers' rice and spring water. It has a slightly dry and crisp taste. Recommended for those who are trying "Hakurou" for the first time.

An assembly of Tokoname souvenirs!

Tokoname City Tourism Plaza

Located in a short walk distance from Tokoname Station. A wide variety of souvenir items are available, from Tokoname ware to lucky cat items, and local specialties such as Onizaki seaweed!

Contact: ☎ 0569-34-8888 5-168-2 Koiehonmachi, Tokoname City Open: 9:00–17:00 Closed: year-end & new-year holidays Access: 1-min. walk from Meitetsu "Tokoname Station" Parking: 18 spaces (public)

MAP A C-4



Recommended item (an example)

Onizaki Seaweed Seasoned, Premium ¥550

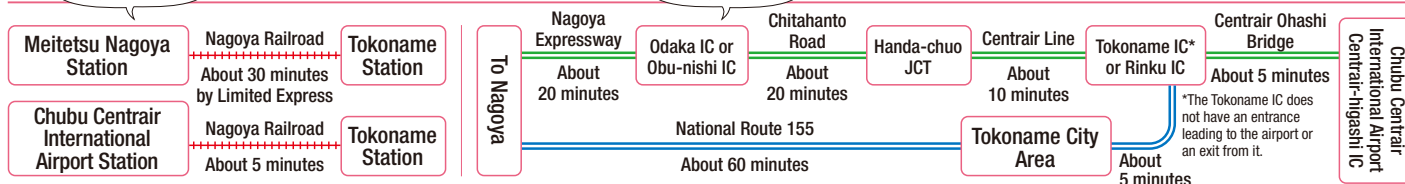
Produced in nutrient-rich fishing grounds, this seaweed features a depth of flavor.

AEON MALL Tokoname has numerous tax-free stores! Scan here for more info.





By train ⇐ Access to Tokoname ⇒ By car



The community bus is convenient for exploring the city!

Community Bus Grün 〓 Free

This community bus, which started running in October of 2022, travels throughout the city. The bus runs throughout the year, so try taking a ride! Details are available here.



Details on Chita Bus can be found here.



Taxi and city transportation information can be found here.



Accommodation and rental car information can be found here.

Contact / Publication information

Tourist Information Center Tokoname City Tourism Plaza 5-168-2 Koiehonmachi, Tokoname, Aichi 479-0838 ☎ 0569-34-8888 Open: 9:00-17:30 Closed: year-end and new-year holidays
Published by Tokoname City Tourism Strategy Division 3-3-5 Asukadai, Tokoname, Aichi 479-8610 ☎ 0569-47-6116 FAX: 0569-34-9784 *Published September 2023

*The information included in this pamphlet is valid as of May 31, 2023 unless otherwise specified. Note that this information is subject to change without notice, so please be sure to inquire with each facility about the latest information and details.
*The amounts indicated in this document include a 10% consumption tax (or an 8% consumption tax in the case of items subject to a reduced tax rate).

Cover photo credit: Machi No Eki Tokoname-yaki Yamatane (Tokoname Ware Yamatane)